

**GENERAL NOTES:**

1. ROLL-UP SHUTTER SHOWN ON THIS PROJECT EVALUATION DOCUMENT (P.E.D.) HAS BEEN VERIFIED FOR CODE COMPLIANCE IN ACCORDANCE WITH THE 2017 (6th EDITION) OF THE FLORIDA BUILDING CODE. ROLL-UP SHUTTER SHALL NOT BE INSTALLED AT HIGH-WIND/VELLOCITY HURRICANE ZONES (HMAI, DDC/BR/OWND COUNTIES).

DESIGN WIND LOADS SHALL BE DETERMINED AS PER SECTION 1609 OF THE ABOVE MENTIONED CODE. FOR A BASIC WIND SPEED REQUIRED BY THE JURISDICTION WHERE SHUTTER WILL BE INSTALLED WITH A DIRECTIONAL FACTOR  $K_{zt}$  OF 1.0 PER INSTALLATIONS UNDER 2017 FBC AND SHALL NOT EXCEED THE MAXIMUM (A.S.D.) DESIGN PRESSURE RATINGS INDICATED ON NOTE 2 BELOW. IN ORDER TO VERIFY THE ABOVE CONDITION, ULTIMATE DESIGN WIND LOADS DETERMINED PER ASCE 7-10 SHALL BE FIRST REDUCED TO A.S.D. DESIGN WIND LOADS BY MULTIPLYING THEM BY 0.6 IN ORDER TO COMPARE THESE W/ MAX (A.S.D.) DESIGN PRESSURE RATINGS INDICATED ON NOTE 2 BELOW.

IN ORDER TO VERIFY THAT ANCHORS ON THIS P.E.D. AS TESTED, WERE NOT OVERSTRESSED, A 10% INCREASE IN ALLOWABLE STRESS FOR WIND LOADS WAS NOT USED IN THEIR ANALYSIS. SHUTTER WEIGHTS AND WIDTHS EQUAL OR SMALLER THAN MAXIMUM ALLOWABLE INDICATED IN THIS DRAWING ARE ACCEPTABLE FOR INSTALLATION.

**+50.0 PSF, -55.0 PSF**

2. MAXIMUM A.S.D. DESIGN PRESSURE RATINGS:

ANY DESIGN WIND LOAD, SLAT SPAN, SHUTTER WEIGHTS AND WIDTHS EQUAL OR SMALLER THAN MAXIMUM ALLOWABLE INDICATED IN THIS DRAWING ARE ACCEPTABLE FOR INSTALLATION.

3. ALL ALUMINUM EXTRUSIONS SHALL BE 6063-T5 ALLOY (UNLESS OTHERWISE NOTED).

4. ALL SCREWS TO BE STAINLESS STEEL 304 OR 316 SERIES W/ 80 LB YIELD STRENGTH AND 80 LB TENSILE STRENGTH OR CORROSION RESISTANT COATED CARBON STEEL AS PER DIM 50918 OR ASTM A 510-02 AND SHALL COMPLY WITH FLORIDA BUILDING CODE SECTION 2411.1.1.4.

5. BOLTS TO BE 2024-T4 ALUMINUM ALLOY: ASTM A-317 GALVANIZED OR A51 304 SERIES STAINLESS STEEL WITH 35 ksi MAXIMUM YIELD STRENGTH & SHALL COMPLY W/ FLORIDA BUILDING CODE SECTION 2411.1.1.4.

6. STORM BARS AT FLOOR AND CEILING MOUNTING INSTALLATIONS MAY BE REMOVABLE AT NEW HURRICANE CONDITIONS. HOWEVER, EACH STORM BAR SHALL BEAR A PERMANENT LABEL IN A VISIBLE PLACE WITH A WARNING NOT TO REMOVE THE BAR DURING AND AFTER THE STORM BARS MUST BE INSTALLED WITH CORRESPONDING HANDING DURING PERIODS OF HIGH WINDS AND THAT ROLL UP SHUTTERS WILL NOT OPERE PROPERLY UNLESS ALL STORM BARS ARE INSTALLED AS DIRECTED.

7. REMOVABLE STORM BARS SHALL BE STORED IN A CONVENIENT PLACE WITH EASY AND UNIMPEDED ACCESS SO THAT THEY CAN BE REACHED AND INSTALLED ANY TIME (HURRICANE CONDITIONS OR NOT) SLATS ARE ROLLED DOWN. THE EFFECT OF THE SLATS ROLLED DOWN WITHOUT STORM BARS IS, THESE SLATS WILL SLIP OUT OF TRACK DUE TO THE DISTORTION CAUSED BY WIND FORCES.

8. PROTECTED PLANK DETACHMENT ISG IS A POLYPROPYLENE MANUFACTURED BY POLY N SOLIDAR, INC. USED AT STRAND LOADED SYSTEM FOR REMOVABLE STORM BARS & COMPLES W/ THE FOLLOWING SPECIFICATIONS:

DESCRIPTION	PROPERTIES	VALUE
ASTM D-302	DENSITY	94.57 lbs/ft <sup>3</sup> (APPROX)
ASTM D-638	YIELD POINT	3800 psi (APPROX)
ASTM D-638	TENSILE BREAK	4200 psi (APPROX)
ASTM D-638	ELONGATION AT BREAK	600 % (APPROX)
ASTM D-790	FLEXURAL MODULUS	145000 psi (APPROX)
ASTM D-4020	1200 IMPACT	0.15 ft-lb/inch (APPROX)
UL 24	FIRE RATING	15 " (APPROX)
ASTM E-84	FLAME SPREAD INDEX	375 " (APPROX)
ASTM E-84	SMOKE DEVELOPMENT INDEX	375 " (APPROX)

9. ANCHORS TO WALL FOR SDE RAIS & BOX CONNECTION SHALL BE AS FOLLOWS:

- 1/4" 3 BARON ANCHORS AS MANUFACTURED BY F.I.W. BULLOCK OR ELOCO CONSTRUCTION PRODUCTS.

NOTES:  
A.1) MAXIMUM EMBEDMENT OF BARON ANCHORS INTO FOUNDED CONCRETE IS 1 3/4" - NO EMBEDMENT INTO STUCCO SHALL BE CONSIDERED AS PART OF THE REQUIRED EMBEDMENT.  
A.2) IN CASE THAT PRECAST STONE, PRECAST CONCRETE OR BRICK PANELS, KICKER OR PAGES BE FOUND ON THE EXISTING WALL OR FLOOR ANCHORS SHALL BE LONG ENOUGH TO REACH THE MAIN STRUCTURE BEHIND SUCH COVERS. ANCHORING SHALL BE AS INDICATED ON NOTE A.1 ABOVE.

(B) TO EXISTING CONCRETE A.S.I.W. C-60 BLOCK WALL:  
- 1/4" 3 BARON ANCHORS AS MANUFACTURED BY F.I.W. BULLOCK OR ELOCO CONSTRUCTION PRODUCTS.

NOTES:  
B.1) MAXIMUM EMBEDMENT OF BARON ANCHORS INTO CONCRETE BLOCK UNIT SHALL BE 1 1/4".  
B.2) IN CASE THAT PRECAST STONE, PRECAST CONCRETE OR BRICK PANELS, KICKER OR PAGES BE FOUND ON THE EXISTING WALL OR FLOOR ANCHORS SHALL BE LONG ENOUGH TO REACH THE MAIN STRUCTURE BEHIND SUCH COVERS. ANCHORING SHALL BE AS INDICATED ON NOTE B.1 ABOVE.

(C) TO EXISTING WOOD FRAME WALL (MIN SPECIFIC GRAVITY = 0.38):  
- 3/16" 3 WOOD SCREWS W/ 2" MIN EMBEDMENT INTO WOOD BEYOND ANY WALL FINISH.

(D) ANCHORS SHALL BE INSTALLED FOLLOWING ALL OF THE RECOMMENDATIONS AND SPECIFICATIONS OF THE ANCHOR'S MANUFACTURER.

(E) ANCHORS REQUIRED FOR STORM BARS & HEADER CONNECTIONS SHALL BE AS SPECIFIED ON APPLICABLE SECTIONS SHOWN ON SHEETS 4 & 5 OF 5. POWER BOLT ANCHORS TO BE AS MANUFACTURED BY POWERS FASTENERS, INC. WOOD SCREWS SHALL BE COMPLY W/ THE NATIONAL DESIGN SPECIFICATION FROM AERIAL.

10. THE INSTALLATION CONTRACTOR IS TO SEAL/CALK ALL SHUTTER COMPONENT EDGES WHICH REMAIN IN CONTINUOUS CONTACT WITH THE BUILDING TO PREVENT WIND/RAIN INTRUSION.

11. IT SHALL BE THE RESPONSIBILITY OF THE CONTRACTOR TO VERIFY THE SOUNDNESS OF THE STRUCTURE WHERE SHUTTER IS TO BE ATTACHED TO INSURE PROPER ANCHORAGE THIS SHUTTER SHALL ONLY BE ATTACHED TO CONCRETE, CONCRETE BLOCK OR WOOD FRAME BUILDINGS.

12. SHUTTER'S INSTALLATION SHALL COMPLY WITH ALL SPECS INDICATED IN THIS DRAWING PLUS ANY BUILDING AND ZONING REGULATIONS PROVIDED BY THE JURISDICTION WHERE PERMIT IS APPLIED TO.

13. LIFTING MECHANISM NOT PART OF THIS APPROVAL, BUT SHALL BE CERTIFIED BY AN INDEPENDENT TESTING AGENCY.

14. (a) THIS P.E.D. PREPARED BY THIS ENGINEER IS GENERAL AND DOES NOT PROVIDE INFORMATION FOR A SITE SPECIFIC PROJECT. (b) WHERE THE SITE CONDITIONS DEVIATE FROM THE P.E.D.

(c) CONTRACTOR TO BE RESPONSIBLE FOR THE SELECTION, PURCHASE AND INSTALLATION INCLUDING LIFE SAFETY OF THIS PRODUCT. BASED ON THIS P.E.D. PROVIDED HE/SHE DOES NOT DEVIATE FROM THE CONDITIONS DETAILD ON THIS DOCUMENT. CONSTRUCTION SAFETY AT SITE IS THE CONTRACTOR'S RESPONSIBILITY.

(d) THIS P.E.D. WILL BE CONSIDERED INVALID IF ALTERED BY ANY MEANS.

(e) THE SPECIFIC PROJECTS SHALL BE PREPARED BY A FLORIDA REGISTERED ENGINEER OR ARCHITECT WHOSE SEAL SHALL BECOME THE ENGINEER OF RECORD (E.O.R.) FOR THE PROJECT AND WHO WILL BE RESPONSIBLE FOR THE PROPER USE OF THE P.E.D. ENGINEER OF RECORD, ACTING AS A DETACHED ENGINEER TO THE P.E.D. ENGINEER, SHALL SIGN TO THIS LETTER THE SITE SPECIFIC DIMENSIONS FOR RETURN.

(f) THIS P.E.D. SHALL BEAR THE DATE AND ORIGINAL SEAL AND SIGNATURE OF THE PROFESSIONAL ENGINEER OF RECORD THAT PREPARED IT.

15. SHUTTER MANUFACTURER'S LABEL SHALL BE LOCATED ON A READILY VISIBLE LOCATION AT ROLL-UP IN ACCORDANCE WITH SECTION 1709.9.1 OF FLORIDA BUILDING CODE. ONE LABEL SHALL BE PLACED FOR EVERY DRAWING LABELING TO COMPLY WITH SECTION 1709.9.2 OF THE FLORIDA BUILDING CODE.



© 2017 ALUTECH, INC.

**TILECO INC.**

TILE CO. TESTING & ENGINEERING COMPANY  
1200 S.W. 15th St., Suite 100, Ft. Lauderdale, FL 33304  
Tel: (954) 333-1144 Fax: (954) 436-5100  
www.tilecoinc.com

FLORIDA BUILDING CODE (Non High Velocity Hurricane Zone)

STUDIO STAR 40mm ROLL-UP SHUTTER

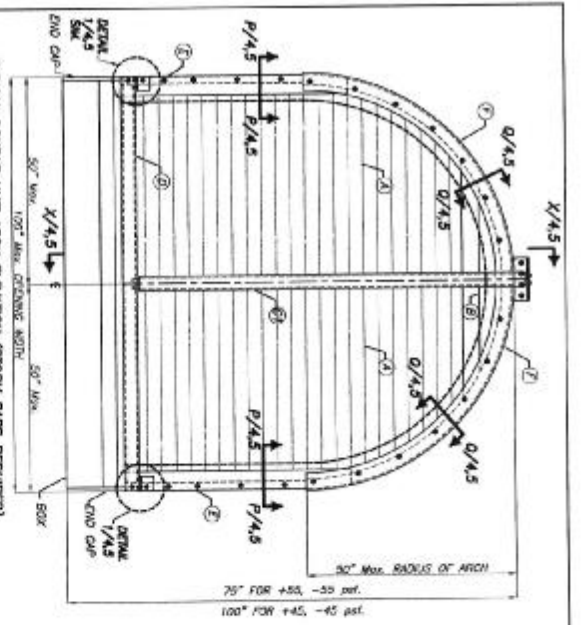
ALUTECH UNITED INC.

12 DORON STREET  
SCOTTSDALE, AZ 85267  
PHONE: (800) 233-1144 FAX: (480) 436-5100

NO.	REV.	DATE	BY	CHKD	APP'D
1	1	02/26/17			
2	1	02/26/17			

17-240  
DRAWING NO.

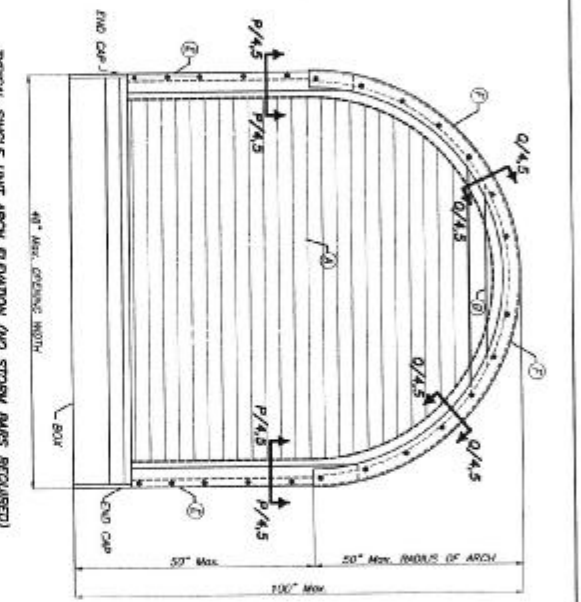
SHEET 1 OF 5



TYPICAL DOUBLE UNIT ARCH ELEVATION (STORM BARS REQUIRED)

NOTE: SEE SHEET 2 OF 5 FOR COMPONENTS MANUFACTURING.

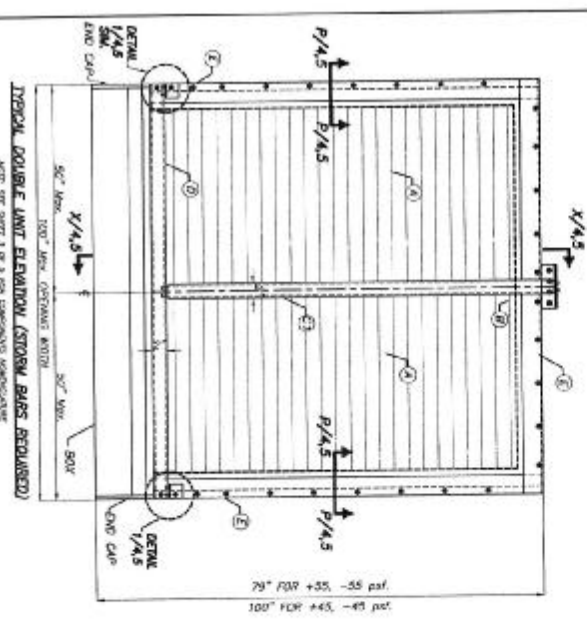
SCALE: 3/8\"/>



TYPICAL SINGLE UNIT ARCH ELEVATION (NO STORM BARS REQUIRED)

NOTE: SEE SHEET 2 OF 5 FOR COMPONENTS MANUFACTURING.

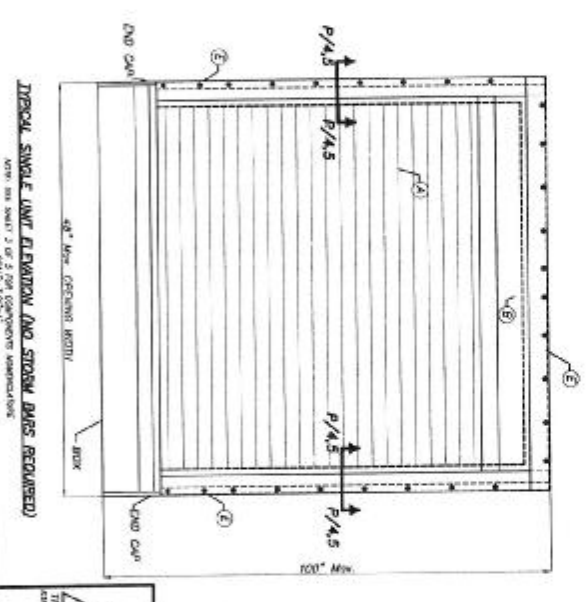
SCALE: 3/8\"/>



TYPICAL DOUBLE UNIT ELEVATION (STORM BARS REQUIRED)

NOTE: SEE SHEET 3 OF 5 FOR COMPONENTS MANUFACTURING.

SCALE: 3/8\"/>



TYPICAL SINGLE UNIT ELEVATION (NO STORM BARS REQUIRED)

NOTE: SEE SHEET 3 OF 5 FOR COMPONENTS MANUFACTURING.

SCALE: 3/8\"/>



93017 N.W. 20th, INC.

**TILECO INC.**

TILET TESTING & ENGINEERING COMPANY  
 2000 N.W. 20th St., Ste. 200, Ft. Lauderdale, FL 33309  
 Phone: (954) 575-1100  
 FAX: (954) 575-1101  
 WALTER A. TILIT JR., P.E.  
 FL LICENSE NO. 44167

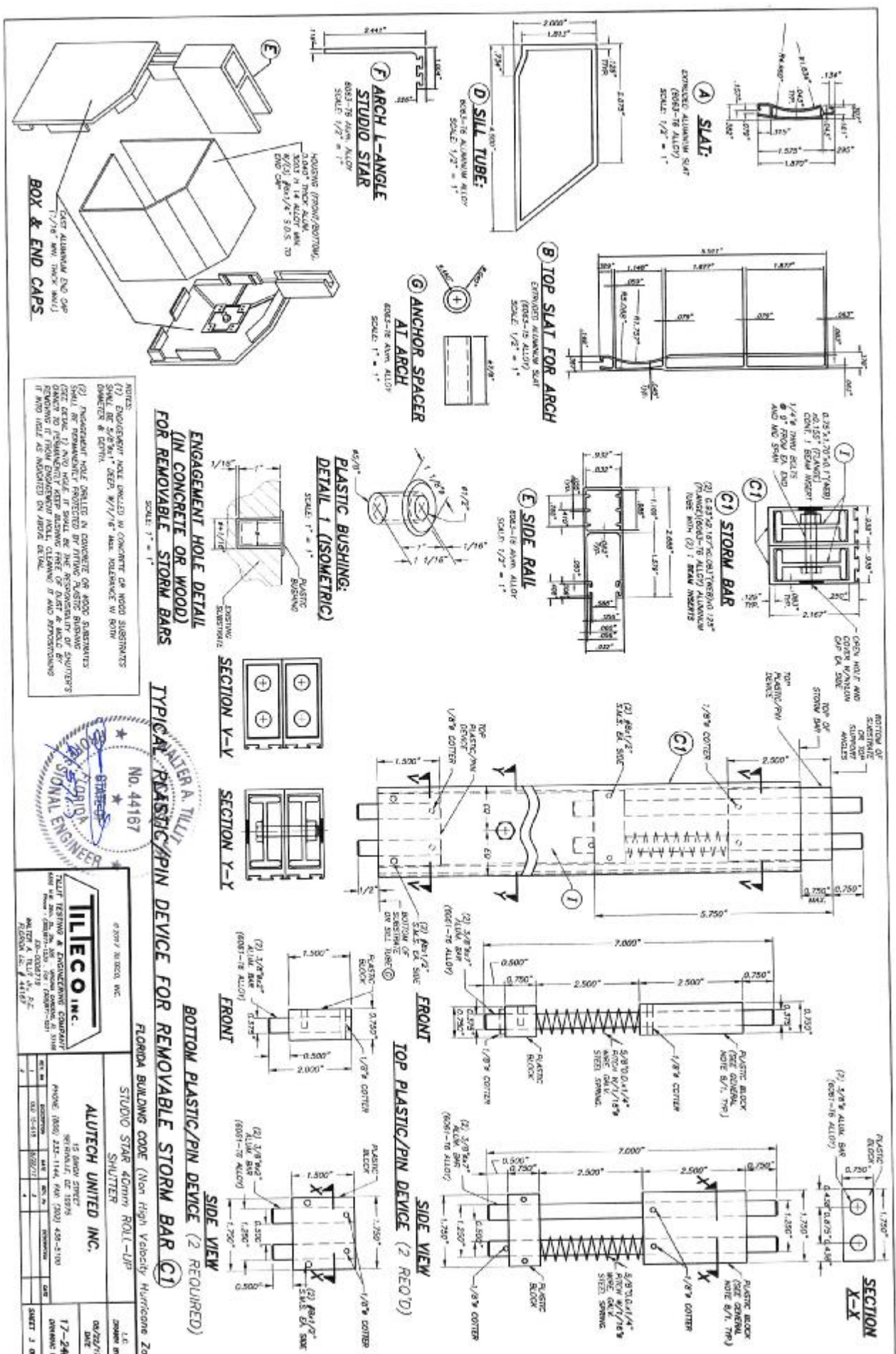
FLORIDA BUILDING CODE (Non High Velocity Hurricane Zone)

STUDIO STAR 40mm Roll-Up  
SHUTTER

ALUTECH UNITED INC.  
 19 GARDEN STREET  
 SCOTTSVILLE, KY 40455  
 PHONE: (606) 233-1144 FAX: (606) 438-3100

REV.	DATE	BY	CHK	DESCRIPTION
1				
2				

LIC. NO. 08/28/17  
 DWG. NO. 17-240  
 SHEET 2 OF 5



**NOTES:**

(1) ENGAGEMENT HOLE DRILLED IN CONCRETE OR WOOD SUBSTRATES SHALL BE 5/8" DIA. DEEP 3/16" MAX. RESIDUAL TO ROOM DIMENSION & CENTER.

(2) PLUGGING HOLE DRILLED IN CONCRETE OR WOOD SUBSTRATES SHALL BE PERMANENTLY PROTECTED BY FITTING PLASTIC BUSHING OR GROUT. IT IS NOT TO BE REMOVED. THE USE OF DIRT & MOULD OR OTHER MATERIALS IS PROHIBITED. THE USE OF DIRT & MOULD OR OTHER MATERIALS IS PROHIBITED. THE USE OF DIRT & MOULD OR OTHER MATERIALS IS PROHIBITED.



**TILTECO INC.**  
 15007 ALBUCA, INC.  
 TILLET TESTING & ENGINEERING COMPANY  
 15007 ALBUCA, INC. (SUITE 200) ALBUCA, FL 32710  
 PHONE: (850) 233-1144 FAX: (904) 439-1100  
 WWW: WWW.TILTECO.COM  
 E-MAIL: INFO@TILTECO.COM

**ALUTECH UNITED INC.**  
 15007 ALBUCA, INC.  
 PHONE: (850) 233-1144 FAX: (904) 439-1100  
 WWW: WWW.ALUTECH.COM  
 E-MAIL: INFO@ALUTECH.COM

FLORIDA BUILDING CODE (Non High Velocity Hurricane Zone)  
 STUDIO STAR 400mm ROLL-UP SHUTTER

DATE: 04/22/17  
 DRAWN BY: [Blank]  
 CHECKED BY: [Blank]  
 17-240  
 SHEET 3 OF 3

**TYPICAL PLASTIC/PIN DEVICE FOR REMOVABLE STORM BAR (2 REQUIRED)**

**SECTION Y-Y**

**SECTION X-X**

**FRONT VIEW**

**SIDE VIEW**

**TOP PLASTIC/PIN DEVICE (2 REQ'D)**

**BOTTOM PLASTIC/PIN DEVICE (2 REQUIRED)**



